

Healthcare Technologies & Services



THE HEALTH ENGAGEMENT PLATFORM



cme[°]
—

INGO HEALTH

**The Most Comprehensive Health
Engagement Platform.**



Recognized at Insuretek Middle East
Golden Shield Excellence Awards.



RECHARGING EMPLOYEE ENGAGEMENT AND PRODUCTIVITY

INGO Health is offered by companies to drive healthier lifestyles for their employees and rebuild a shared culture, while keeping an eye on the program's social and financial impact.

The Covid-19 pandemic has brought well-being to the forefront as employers are more aware than ever of the impact of physical and mental health on employees and by association, the overall company performance.

Burnout is all too common as remote employees often sit behind their laptops for long hours without the usual workplace breaks. New cultural divides are surfacing - for example, between teams that can work from home and those who don't have that option, or even between those who joined the company during the pandemic and those who were there well before.

HR leaders are revamping their corporate wellness programs to break the sedentary and unhealthy practices cumulated over the past year, but also to ignite new forms of social encounters, and reset a strong and federating company culture to an evermore digitized workforce.

Here's where INGO Health comes to the scene. Leveraging gamification strategies, new technologies and analytics, this new generation of corporate wellness programs enables companies to enhance their people's physical and mental health and get more engaged and sociable while fostering a collective sense of purpose, with the ability to measure the program's return on investment.

MEANINGFUL VALUE FOR EVERYONE



**Drive behavioral change
towards a healthier and
more active lifestyle.**



**Build and help sustain
higher employee
morale and mental
health.**



**Increase employee
productivity and
decrease absenteeism.**



**Strengthen the
company's culture,
improve recruitment
and retention.**



**Prevent elevated health
risks, reduce healthcare
costs and medical bills.**



**Measure the program's
impact and derive
actionable insights.**

INGO HEALTH

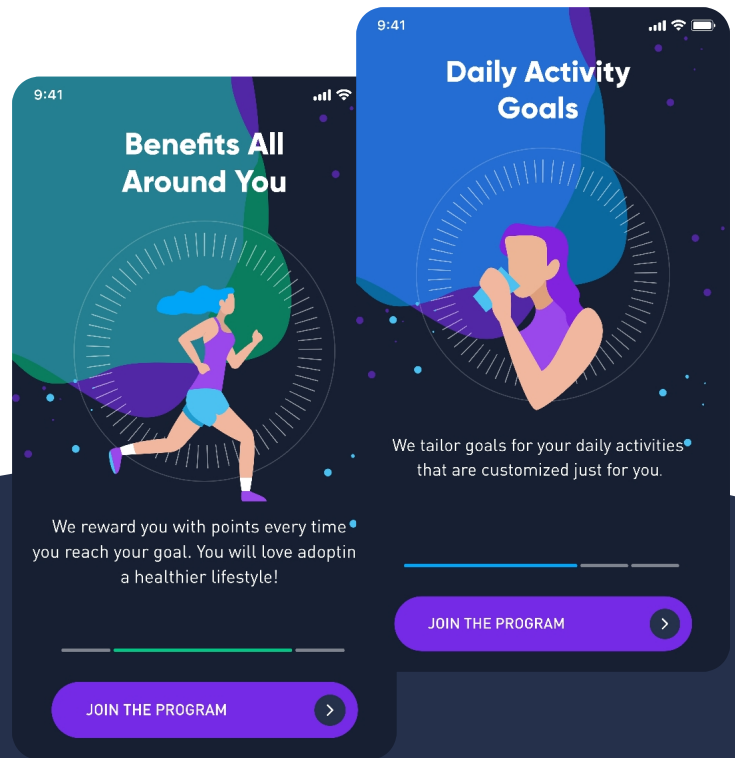
INGO Health enables Health Engagement through personalized programs and tangible rewards.



With motivation and fun,
offer durable healthy
behavior for your people and
different target groups.

INGO HEALTH

Get a first-hand overview of your groups and tailor targeted, engaging and powerful programs.



Change behaviors to the better with scientifically built-in formulas, KPIs and rewards.

TAKE IT TO THE NEXT LEVEL

INGO Health is a ready-to-go Health Engagement solution, leveraging domain best social, scientific and technological practices.

INGO Health amplifies the motivational aspect by integrating multiple gamification layers, points earning and tangible rewards, with personalized daily and weekly goals, in a highly interactive and human-centric experience.

Furthermore, in addition to tracking training, steps, active calories, and sleep, INGO Health monitors water consumption, a key metric that regular apps are unable to accurately measure, thanks to a uniquely designed Smart Water Bottle that precisely captures water intake.



A COMPREHENSIVE SOLUTION

INGO Health encompasses all you need to kick-start your program.

Mobile App



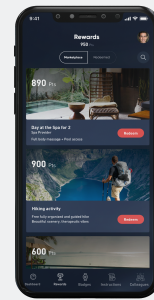
A uniquely designed and engaging mobile app with dynamic gamification tactics, personalization features and social interactions.

Water Bottle



A cheat-proof, highly accurate Smart Water Bottle with customization options to match your brand and user's preferences.

Marketplace



A marketplace that includes diversified rewards and can be customized to your needs and localized to your markets.

Customer Support



A six-language 24/7 omnichannel customer support service to assist users and answer their queries.

Administration & BI App



An administration and business intelligence app to set up your program components, monitor adoption and effectiveness and get higher visibility with HRMS integration.

MOBILE APP



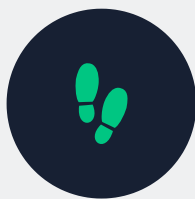
INGO Health mobile app can track up to 5 performance indicators (KPIs):



Water
Intake



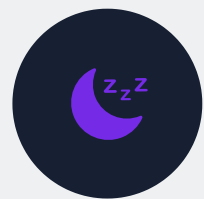
Training
Period



Steps
Walked



Active
Calories



Sleeping
Pattern

The app is unique by its flexibility to read activity data from different wearables via the user's health app (Fitbit, Garmin, Apple Watch, Huawei Health compatible devices), and its ability to connect with INGO Smart Water Bottle.

It has a superior immersive user interface, with several gamification layers and tactics such as points, badges and quests, which take the user on a healthy journey. More notably, it connects groups with each other in a competitive leaderboard creating a fun, challenging and motivational environment.



SMART BOTTLE

INGO Smart Water Bottle (US Patent pending) is our own smart innovation to help people drink enough water everyday. The bottle is accurate to an extent that it only records the amount of water the user drinks and omits the water spilled. Its battery can last up to 8 days!

This innovative solution represents the IoT technology at its best.



Food-grade plastic bottle



Up to 14 days battery life



Highly accurate flowmeter



Leak-proof cap



Ergonomic and shockproof design



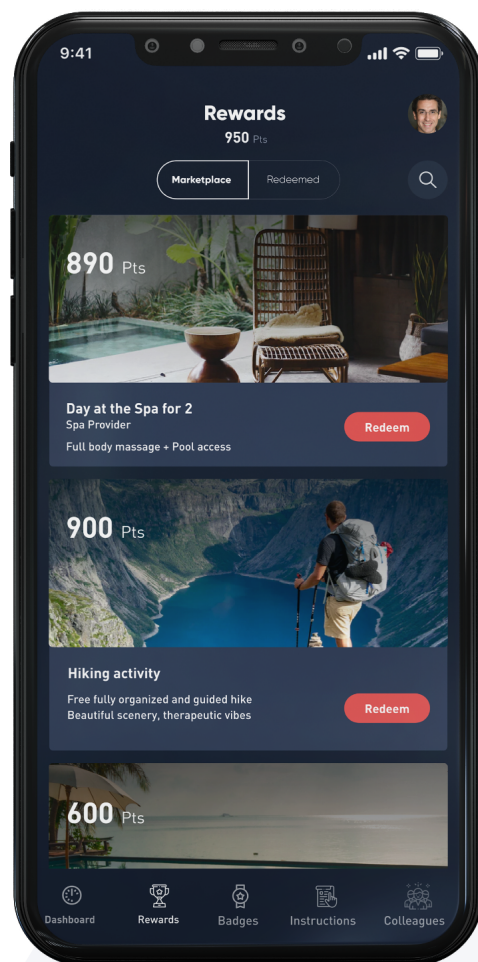
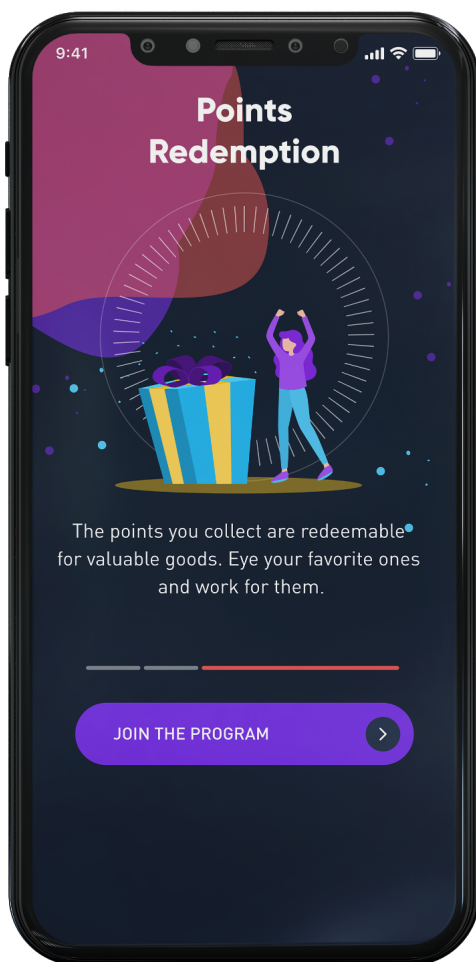
Customizable colors
and branding

MARKETPLACE

The marketplace curates the best and most attractive offers available on each market, with the ability to customize as per your company's business requirements.

You can offer entry into bonus schemes or discounts on specific products or activities to further shape the desired behavior.

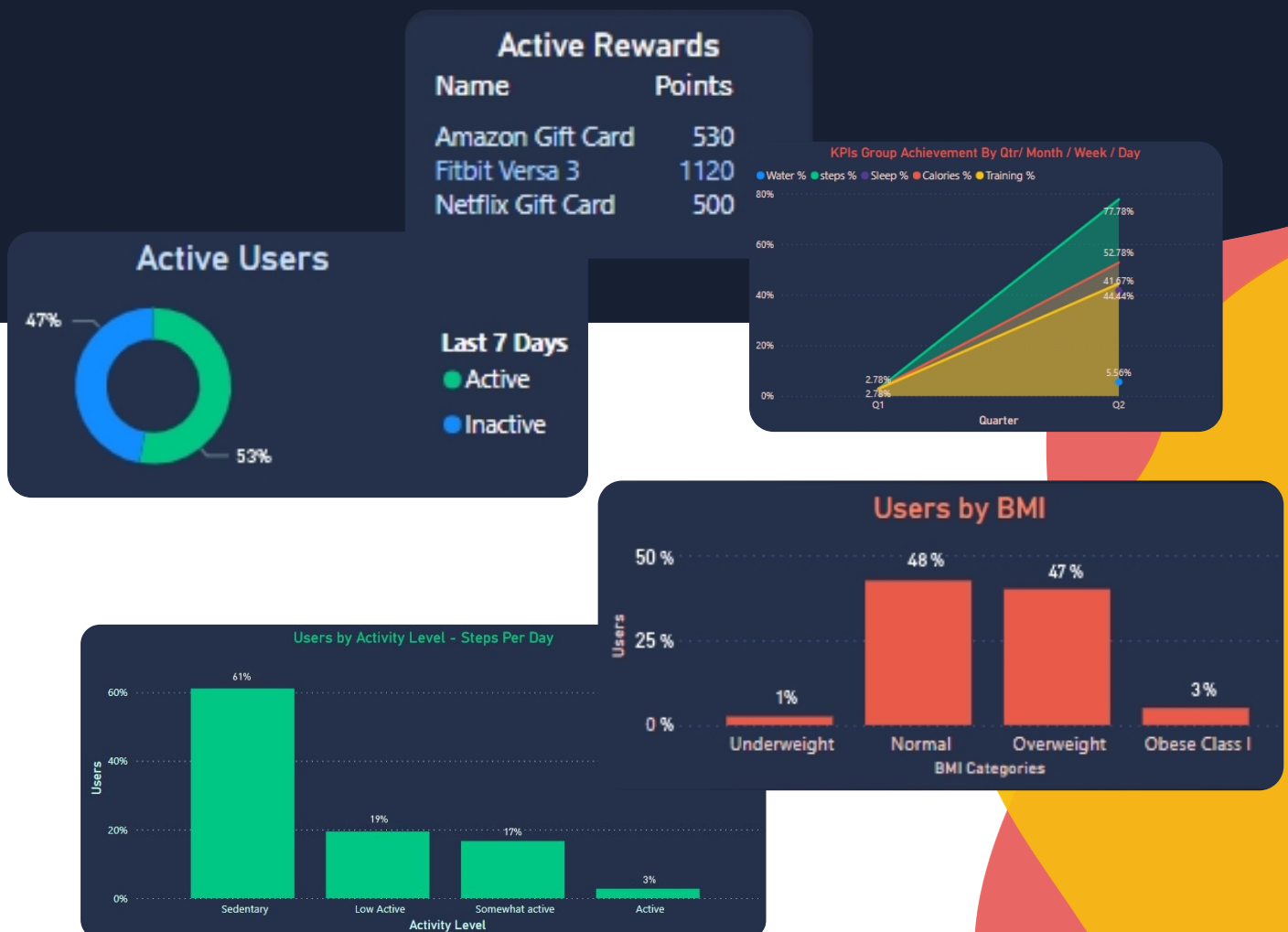
The marketplace configuration is simple and can be managed via the Administration and Business Intelligence app.



ADMINISTRATION & BUSINESS INTELLIGENCE

Manage your program, consolidate data, and keep a close eye on ROI, all under one business intelligence platform.

- Configure group-targeted health plans based on the criteria of your choice, manage your rewards catalogue and marketplace.
- Monitor program adoption, get full visibility on users' health and lifestyles, track progress, while respecting users' privacy.
- The platform includes a Benefits Administration System and integrates to your HRMS to track the program's social and financial impact.



CUSTOMER SUPPORT

24/7

We provide users with real-time support, around the clock, in 6 natively spoken languages, in line with your brand persona and policies.

Arabic | Chinese | English | French | German | Spanish

Our agents are trained to handle customer inquiries with leading CRM software and a robust suite of contact center technology. They understand and love the brands they provide support for, with no cross-cultural barriers.

We know that the most valuable quality for customer support is the consistency of service; one of our highest priorities.



**Seamless CX,
omnichannel support**



**Serving as an extension
of your brand**



Scalable, competitive pricing



High availability design



**Trained and
multicultural agents**



**Advanced technology
capabilities**

TECHNOLOGIES



Microservices

We use microservice architecture to achieve easier maintenance and higher fault tolerance, thus ensuring faster service roll-out to help you speed up the time-to-market of your products.



Internet of Things

We take advantage of innovative IoT technologies to bring you a range of smart and connected devices that keeps you competitive in a rapidly changing business environment and boosts engagement and loyalty.



Artificial Intelligence

We employ machine learning capabilities to analyze your data and unlock its true potential, improving your operational efficiency and reducing risks, fraud, and abuse.



Hosting

Our cloud-ready solutions, whether deployed on private or public clouds, ensure always-on services that provide scalability to cope with future growth.



Enterprise-Grade Solutions

Our enterprise-grade solutions bring together end-to-end security to safeguard your data, integration-ready architecture, audit, and compliance tools to help you grow faster while reducing risks.

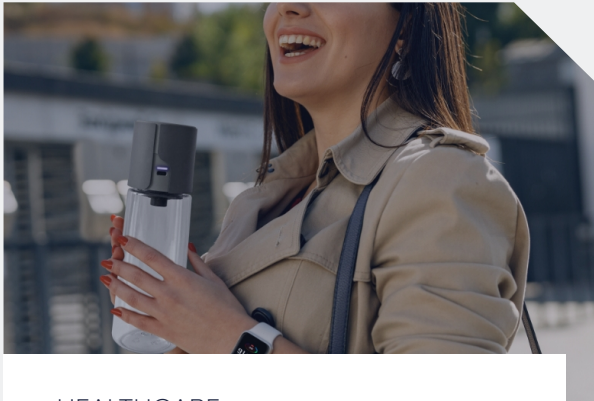


Data Intelligence

We transform your data into business intelligence using our data visualization and analytics expertise, while respecting user privacy. Our solutions help you derive actionable insights, spot trends, identify outliers, and track goal progress.

WHAT WE THINK

Read more about healthcare programs and gamification from our blog.



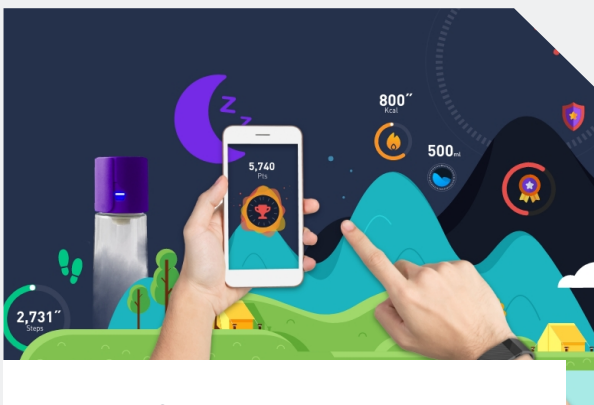
HEALTHCARE

**IoT-Enabled Devices:
Transforming Healthcare
And Supporting Claims**



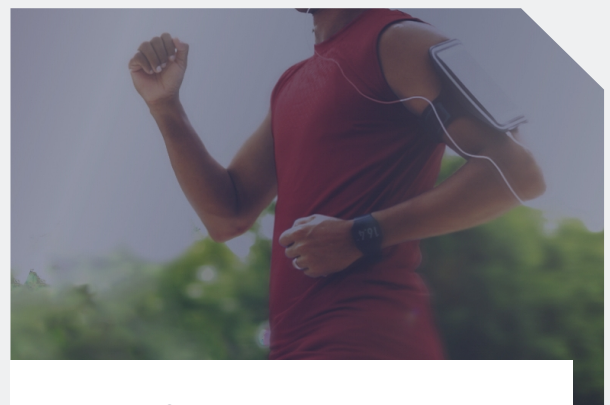
HEALTHCARE

**Why Organizations Use
Gamification To Level-up
Their Corporate Wellness**



HEALTHCARE

**How Organizations Are
Proactively Using
Gamification To Improve**



HEALTHCARE

**Time to Get Serious About
Insurance Healthcare
Gamification**

Let's Talk

www.gotocme.com

www.ingo.health



ABOUT CME

We are a multinational technology consulting firm. We have helped over 100 clients worldwide, including top US Fortune 500 companies, to become and remain leaders in their fields.

We provide premium end-to-end tailor-made solutions and technology services across different disciplines, including Staff Augmentation, Custom Software Development, Smart Devices Engineering, Customer Experience, Internet of Things, Artificial Intelligence, Data Management, and Process Automation.

We accelerate the digital transformation for businesses and corporations by developing scalable and forward-thinking projects to achieve operational excellence, improve customer engagement, and unlock new growth opportunities. Our proven track record of success spans across several industries, including Consumer Goods, Food, Healthcare, Hospitality, Insurance, Market Research, Retail, Telecom, and Utilities.

Our teams of highly skilled engineers, creative thinkers, and industry-specific experts from 8 locations across the globe delivered more than 250 innovative projects. To date, we served 80M+ users and contributed to 8 US Patents.